

CORPORATE BROCHURE

Your specialized metals trading partner since 1947.
Connecting products and technology through expertise.

Sasano Max Co.,Ltd.

Company Profile 2026

Sasano Max



Company Information



Certifications

- ISO 9001 Quality Management System Approval and registration in June 2005.
- "JIS Q9100" Aerospace Quality Management System, certified and registered in April 2017.
- ISO 14001 Environmental Management System Approval and registration in June 2009.



Founded March 1, 1947



Capital 150 million yen (Fully paid)
Sales 19.6 billion yen (FY2025)



Business Description: Specialized trading company for non-ferrous

Metals: Contract work from raw materials to processing



Number of employees: 62 (as of March 2026)

Location Network

We maximize the strengths of our three locations and envision the future together with our customers.



Tokyo Head

Office: Sumitomo Fudosan Shiba Daimon Building 6F, 2-5-5 Shiba Daimon, Minato-ku, Tokyo 105-0012, Japan
[tel:03\(5405\)2030](tel:03(5405)2030) ~ [5fax:03\(5405\)2046](tel:03(5405)2046) * 5-minute walk from JR Hamamatsucho Station



Sendai Branch Office

Office: 645 Sekishita, Masuda, Natori City, Miyagi Prefecture 981-1224, Japan
[tel:022\(384\)3891](tel:022(384)3891) ~ [3fax:022\(384\)3476](tel:022(384)3476)



Nagoya Branch Office

2nd Floor, KA Building, 3-12-20 Imai, Chikusa-ku, Nagoya City, Aichi Prefecture 464-0850, Japan
[tel:052\(744\)3751](tel:052(744)3751) [fax:052\(744\)3753](tel:052(744)3753)



Global Network

By collaboration across three global locations, we can capture the changing world and conduct business that transcends borders



Kaishi Trading (Shanghai) Co.,Ltd.
Established 2007

Room 2208, Jing'an China Building,
No.1701 Beijing West Road,
Jing'an District, Shanghai 200040

tel:+86-21-3353-0010fax:+86-21-3353-0019



SASANOMAX(THAILAND)CO.,LTD.
Established 2011

56 Yada Building, 10th Floor Unit 1002
Silom Road, Suriyawongse, Bangrak,
Bangkok 10500 Thailand

tel: +66-2-234-7745fax:+66-2-234-7746




SASANOMAX USA Inc
Established 2014

SUITE212 VIRGINIA PLACE,1910
SOUTH VIRGINIA STREET HOPKINSVILLE,
KENTUCKY 42240 U.S.A.

tel: +1-270-886-9990fax: +1-270-886-9181

Company History

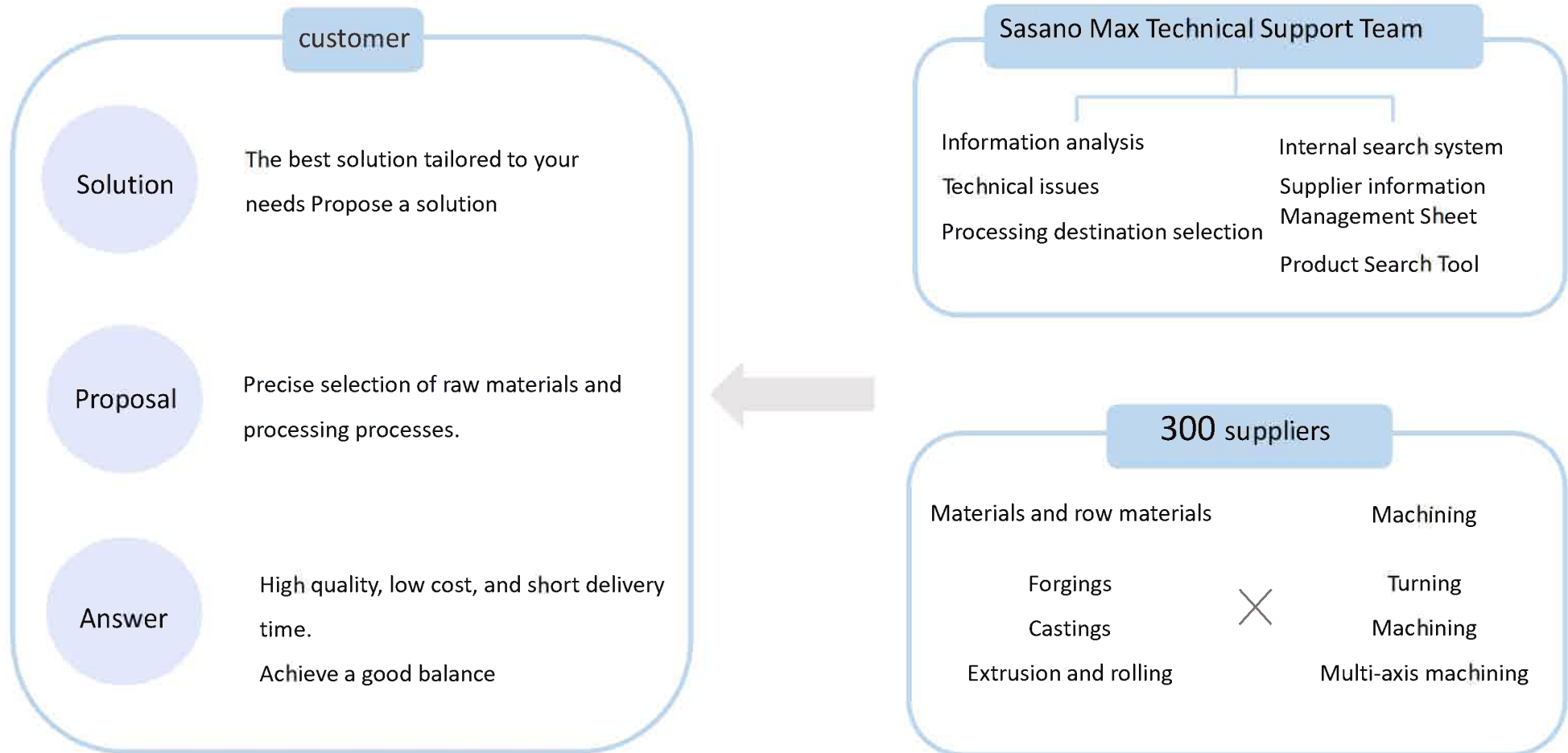
Mar 1947	Established as Sasano Shoten Limited Partnership in Hamamatsucho, Tokyo.	Aug 2014	We have started handling interior building materials for convenience stores.
Sep 1964	Became an authorized agent for Mitsubishi Reynolds Aluminum Co.,Ltd. (now Mitsubishi Materials Corporation)	Sep 2015	Head office relocated to Sumitomo Fudosan Shiba Daimon Building 6F,2-5-5 Shiba Daimon, Minato-ku, Tokyo.
May 1965	Become an authorized agent for Hitachi Cable, Ltd.'s Copper Rolling Division.	Apr 2017	JIS Q 9100(Aerospace Quality Management System)Certification
Apr 1974	A 492m2 office and warehouse was constructed with the aim of expanding Business in the Tohoku region. It began operations as the Sendai branch in January 1975.		
Apr 1995	To expand sales in the Chubu region, the Nagoya Sales Office (now Nagoya Branch) was established in Chikusa-ku, Nagoya City		
Oct 1996	China, Shanghai trade operations commenced; representative stationed in Shanghai.		
Apr 2005	Renamed to Sasano Max Co.,Ltd.		
Jul 2007	Established a local subsidiary in Shanghai, China.		
Feb 2008	Representative office established in Bangkok, Thailand.		
Mar 2009	New office and warehouse construction for Sendai branch.		
Jan 2011	Established a local subsidiary in Bangkok, Thailand.		
Mar 2011	Kaizhi Trading opens Guangzhou branch office in Zhongshan City, Guangdong Province, China		
May 2014	Established a local subsidiary in Kentucky, USA		



Driven by our mission as a specialized intermediary, we have grown alongside the evolution of the non-ferrous metal industry. Our proven track record of adapting to changing times forms the very foundation of our business today.

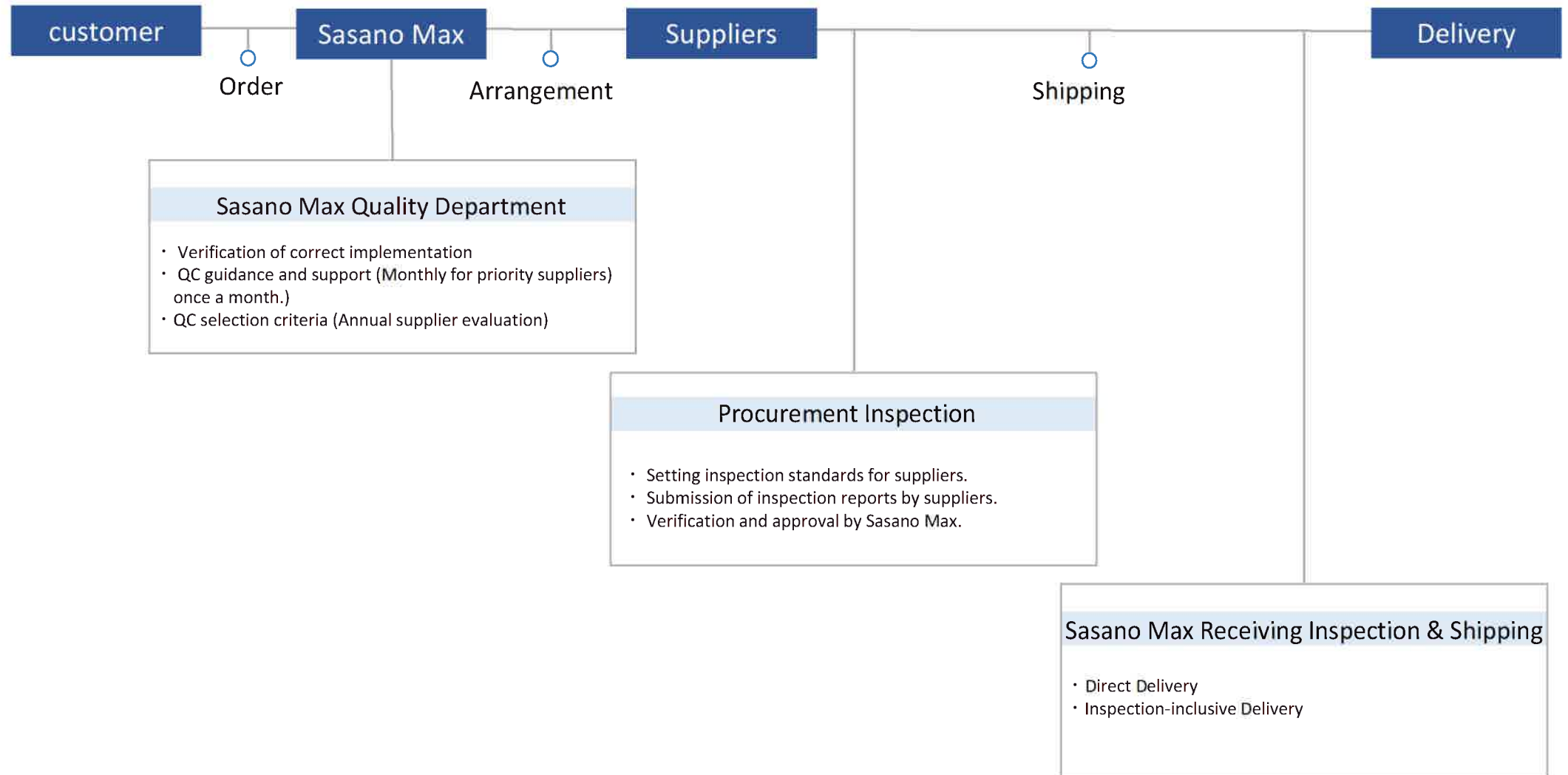
Company Strength

Our Strengths: A platform that connects our customers' products and technologies.



Leveraging our diverse supplier network and extensive technical expertise, the Sasano Technical Support Team provides the optimal solutions tailored to your unique challenges.

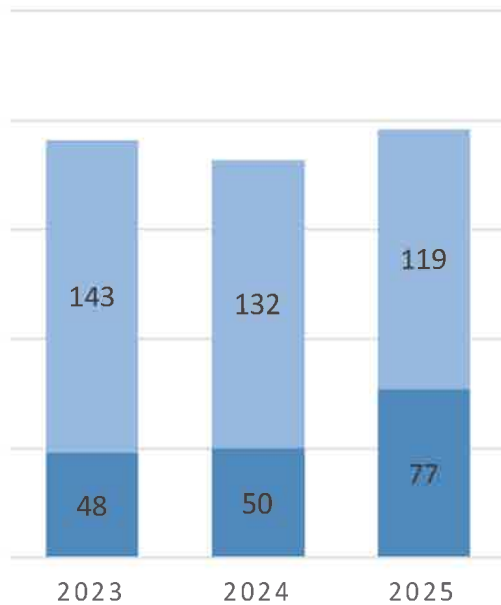
Quality Assurance System



Domestic sales breakdown

Sales (Materials and Parts)

(billion yen) ■ Parts ■ Material

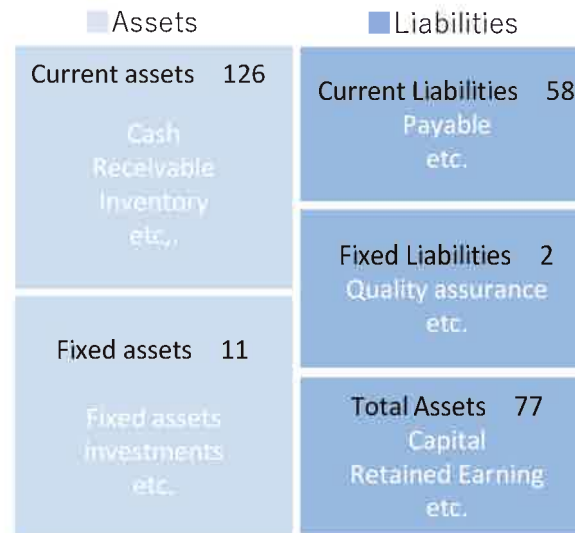


Total Sales for 2025

196 Billion yen

Balance Sheet (as March 2025)

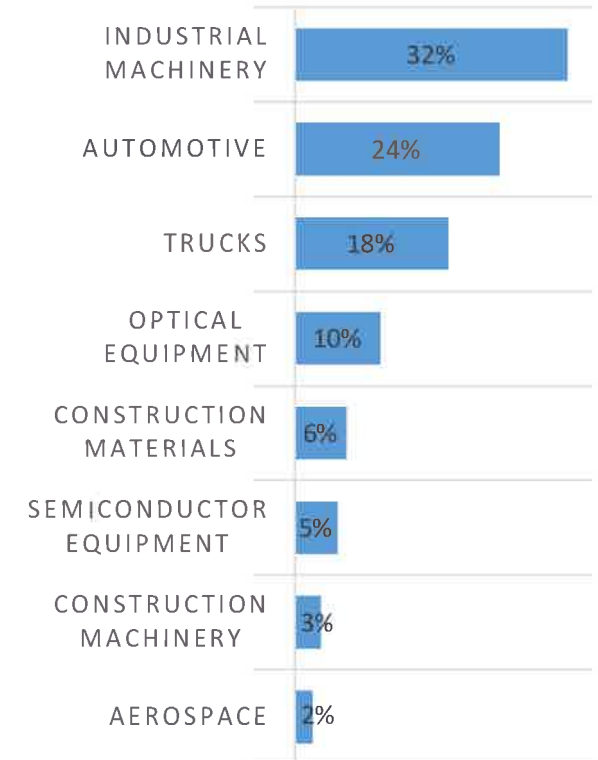
(billion yen)



Total assets as of Mar, 2025

137 Billion yen

Sales by Industry (Parts)

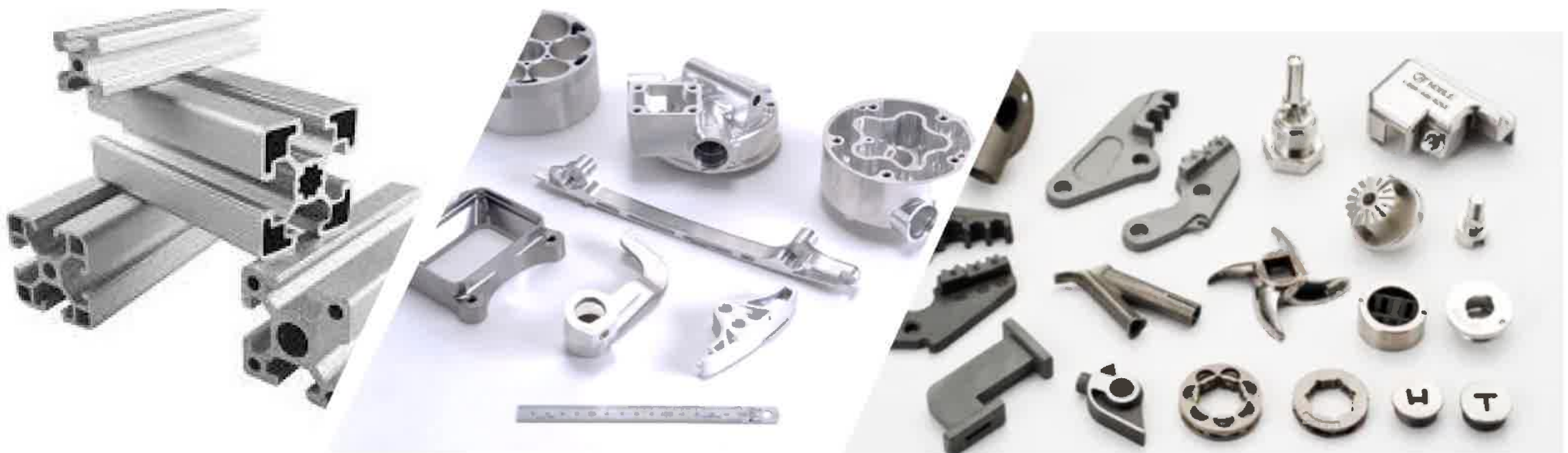


Sales for Parts

77 Billion yen



Product Portfolio



Forgings

Forging Method

Hot die forging (-100kgs)
Cold die forging (-1kg)
Free forging (-2,000kgs)
Rolling forging (- ϕ 4,000)

Material

SC, SCM, SUS
AL, Cu, SUJ, Ti

Features

Near-net-shape production possible
Thin forging available (up to \sim 6mm thick)
Deep-hole forging possible

Lot / Weight

Lot: 1-5,000 pcs
Weight: 0.3-2,000 kgs

Suppliers

24 companies



Sand Casting

Materials

FC, FCD
AC4A, AC4C, AC7A

Features

Suitable for small-lot,
multi-variety production

Lot / Weight

FC, FCD
Lot: 1-1,000 pcs
Weight: 0.1-1,000 kgs

AC4A, AC4C, AC7A
Lot: 1-500 pcs
Weight: 0.1-10 kgs

Suppliers

Iron
6 companies (4 domestic, 2 overseas)

Aluminum
4 companies (3 domestic, 1 overseas)



Die Casting / Casting

Materials

Die Casting
ADC12, ZDC

Gravity Casting
AC4C, AC7A

Investment Casting (Lost Wax)
SCS13, SUS equivalents

Features

Die Casting
Flexible production capacities
from small to large lots

Gravity Casting
Capable of producing complex shapes
and high-volume production.

Lost Wax
Ideal for highly complex geometries
Supports component integration

Lot / Weight

Die Casting
Lot: 500-10,000 pcs
Weight: 0.1-10 kgs (- ϕ 350)

Gravity Casting
Lot: 100-10,000 pcs
Weight: 0.1-10 kgs (- ϕ 250)

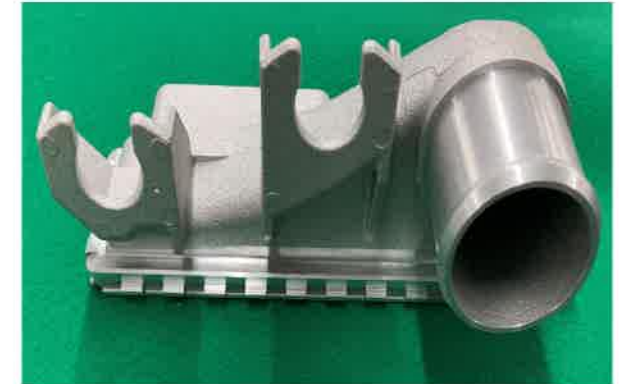
Lost Wax
Lot: 100-10,000 pcs
Weight: 0.1-30 kgs (- ϕ 350)

Suppliers

Die Casting
6 companies (4 domestic, 2 overseas)

Gravity Casting
5 companies (3 domestic, 2 overseas)

Lost Wax
12 companies (2 domestic, 10 overseas)



Rolled & Extruded Products

Materials

Aluminum (1000~7000 Series)

Copper, Stainless, Brass

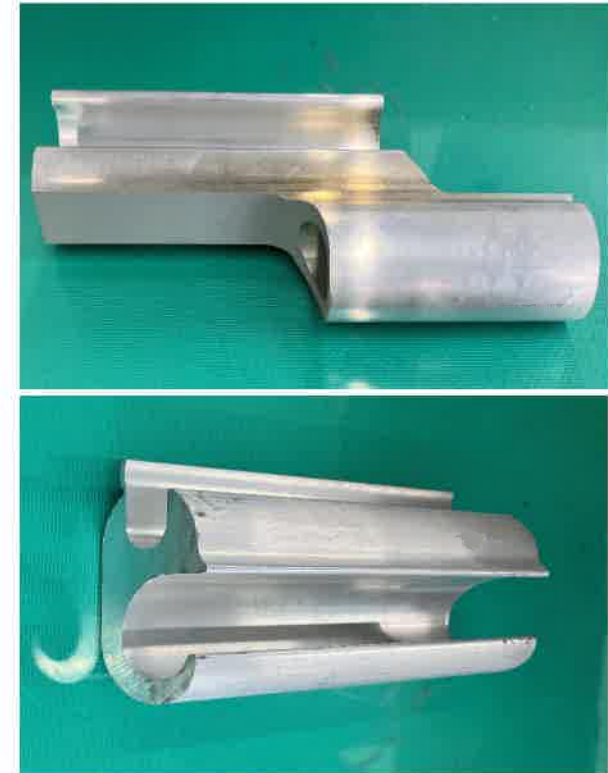
Lot / Weight

Lot: 100-10,000 kg

Weight: 0.1-1,000 kgs per piece

Suppliers

54 companies (30 domestic, 24 overseas)



Machining

Material

SC, SCM, SUS
AL, Cu, brass, FCD

Features

Dimensions : - ϕ 4,000, 9,000 (L),
- 2,500 (W)
Small-scale Precision Machined Parts
Large-scale Heavy Machined parts

Number of trading partners

83 companies (60 domestic, 23 overseas)

Domestic Network Breakdown

Turning/Lathe: 20 suppliers
Machining Centers (MC): 30 suppliers
Multi-Tasking (5-Axis): 10 suppliers

Weight/Lot

Weight: 0.1-1,000kgs
Lot: 1-10,000psc

Machining type

Lathe Turning
(From small to long-length up to 9,000 mm)
Machining Center Processing
Multi-Tasking Machining (5-Axis)



Surface & Heat Treatment

We provide optimal heat and surface treatments tailored to the specific material grades and application requirements.

Surface & Heat Treatment Services

Heat Treatment: Quenching & Tempering, Normalizing, Annealing

Induction Hardening

Carburizing and Nitriding

Plating: Zinc (Uni-chrome / Yellow chromate), Hard Chrome, and more

Anodizing

Black Oxide Coating and other specialized surface treatments

Number of trading partners

30 companies

